

Brillant 221 Cut Off Machine

8
inch



Precise. Capable.

Combining heavy duty construction of a much larger cut off machine with the ability to make precision cuts worthy of the finest abrasive or diamond cut off machines, the **Brillant 221** is a useful tool for most metallographic applications.

A powerful 1 HP motor enables the user to cut through even the hardest materials up to 2 inches in diameter. The Brillant 221 uses diamond or abrasive wheels up to 8 inches in diameter.

The variable speed spindle optimizes motor speed to provide the most efficient cutting rate for superior results. The feed rate is continuously adjustable from 1 to 99 mm/min and held constant throughout the cut.

Electronic controls store predetermined programs allowing easy recall of cutting parameters. The unique Z-axis movement used with a diamond cup wheel allows precision grinding and cutting.



Brillant 221 Cut Off Machine

Max Cutting Capacity:
75 mm / 3" Diameter

Max Cut Off Wheel Size:
200 mm / 8"

Arbor Size: 12.7 mm / 1/2"

Table Size:
200 X 140 mm / 8 x 5.5"
8 mm T-slot

Horizontal Table Movement:
160 mm / 6.3" Travel
with Manual Override

Automatic Pulse Cutting

Z-axis Movement:
15 mm \pm 1 μ m

Speed: 400 - 6000 rpm

Motor: 1.0 HP

Power:
110 V / 60Hz, 1 Phase

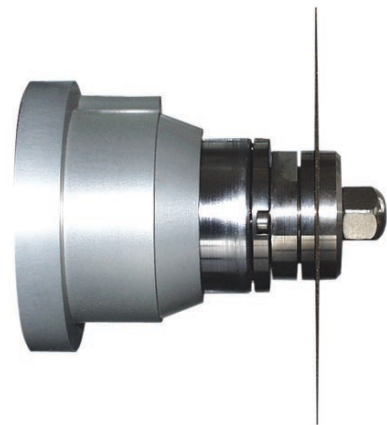
Dimensions W x H x D:
24 x 16 x 19"

Weight: 110 lbs

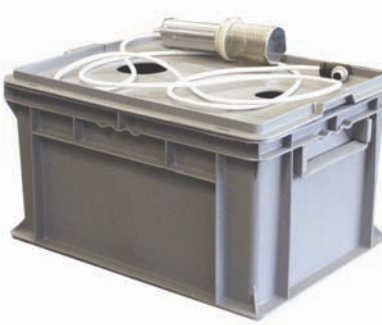
Recirculation System:
15 L / 4 Gallons



The **Tiltable Clamping Vice 40** and **Small Cross Feed Mount** accurately position samples for sectioning



Large **Precision Spindle** can provide Z-axis positioning of the cut off wheel with 1 μ m accuracy



External Recirculation System is easy to clean and maintain



Manual **Diamond Wheel Dressing** can be performed during the cutting operation

