

Brillant 255 Cut Off Machine

14
inch



Strong. Reliable.

The **Brillant 255 Cut Off Machine**, with a spacious LED illuminated cutting chamber and left and right side openings, is an excellent manual option for sectioning long continuous objects.

The **Brillant 255**, built from solid welded aluminum plates and powered by a 10 HP motor mounted outside the

cutting chamber, is made to handle demanding daily use.

The manual, vertical wheel movement combined with manual, horizontal table feed, provides accurate, low deformation cutting. A variety of clamping options for the large, stainless steel table allows for handling of unique samples.



Brilliant 255 Cut Off Machine

Max Cutting Capacity:
150 mm / 5.9" Diameter

Max Cut Off Wheel Size:
400 mm / 16"

Arbor Size: 32 mm / 1¼"

Table Size:
550 x 375 mm / 21.5 x 14.5"
Without Z-axis, 12 mm T-slot

420 x 375 mm / 16.5 x 14.5"
With Z-axis, 12 mm T-slot

Horizontal Table Movement:
365 mm / 14.3" Travel

Vertical Wheel Movement:
170 mm / 6.7"

Motor: 10.0 HP

Power: Specify Voltage,
60 Hz, 3 Phase

Dimensions W x H x D:
44 x 63 x 37"

Weight: 1325 lbs

Recirculation System:
130 L / 34 Gallons

Optional:

Z-axis Table
for Parallel Sectioning
Range: 150 mm / 5.9"

Band Filter

Laser Alignment Tool

Mist Extractor

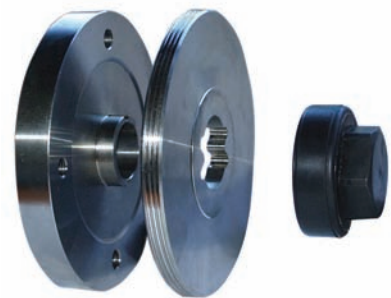


Large, stainless steel 12 mm T-slot table provides an ideal surface for affixing large parts with a variety of clamping options

LED illumination bathes the cutting chamber in a cool white light and is neatly incorporated in the design of the chamber to allow for unencumbered operation



Large, 34 gallon Recirculation System rolls into the base and uses a stainless steel basket with filter bags to extend coolant life



The **EasyNut** is a simple device that locks tight on the arbor shaft yet can be easily removed by anyone in the lab for fast wheel changes

